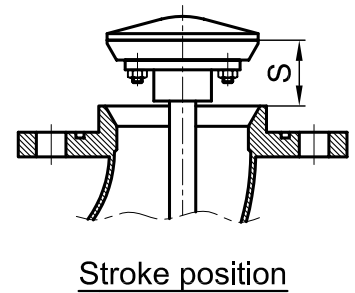
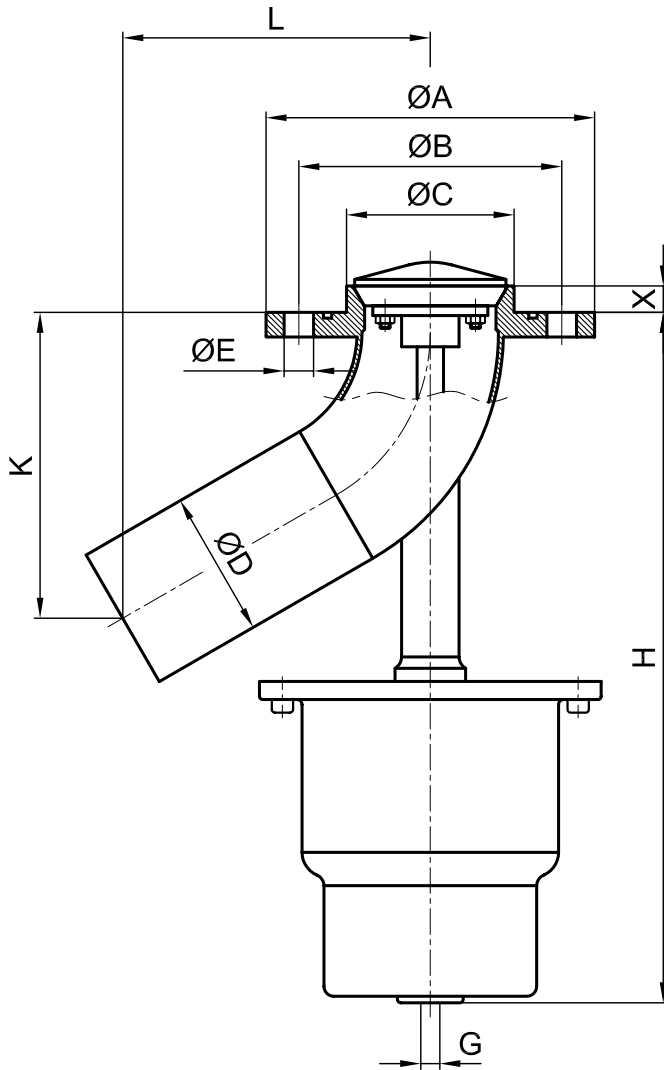


**STAINLESS STEEL  
BUTT WELDED ENDS & FLANGED  
PNEUMATIC ON-OFF TANK BOTTOM VALVE  
OPENING INTO TANK**



DN		PISTON	ØA	ØB	ØC	ØD	ØE	Holes	H	K	L	X	G	S
25	1"	Ø 100	115	85	50	33.7	14	4	245	87	97	14	G 1/8"	30
32	1 1/4"		140	100	57	42.4	18	4	255	100	110	14	G 1/8"	30
40	1 1/2"		150	110	60	48.3	18	4	290	108	115	14	G 1/8"	30
50	2"		165	125	75	60.3	18	4	310	125	125	14	G 1/8"	30
65	2 1/2"	Ø 150	185	145	85	76.1	18	4	400	165	173	16	G 1/4"	40
80	3"		200	160	102	88.9	18	8	420	181	178	16	G 1/4"	40
100	4"		220	180	122	114.3	18	8	455	207	185	16	G 1/4"	40
125	5"		250	210	152	139.7	18	8	490	237	200	16	G 1/4"	40
150	6"		285	240	177	168.3	22	8	525	265	210	16	G 1/4"	40

NOTE : Should be indicated if it is required different size of "X"



**ALFANOX**